

Stiff Operator Door Latch

PURPOSE:

This bulletin explains how to lubricate the operator door latch if it feels stiff and/or difficult to open and close.

PROCEDURE:

1. Using a PTFE (Teflon) based dry film lubricant spray the metallic components of the lock assembly. Reference **Figure 1**.
2. Test the opening and closing of the door.
3. If issue persists, refer to the **Latch Striker Assembly and Adjustment** procedure in the online AROWGuard Service and Procedure manual.

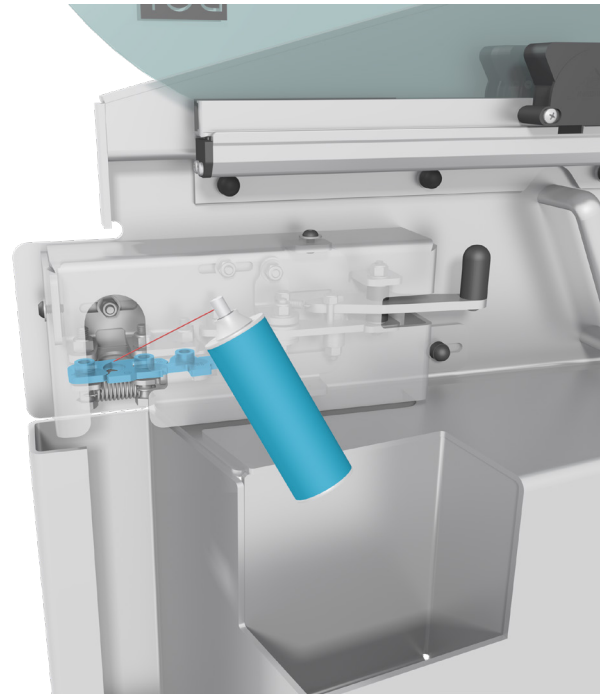


Figure 1: Lock assembly metallic components